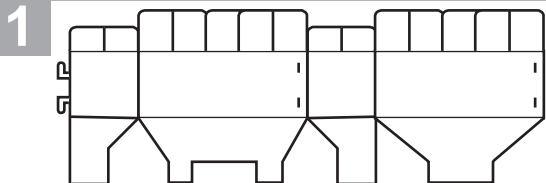


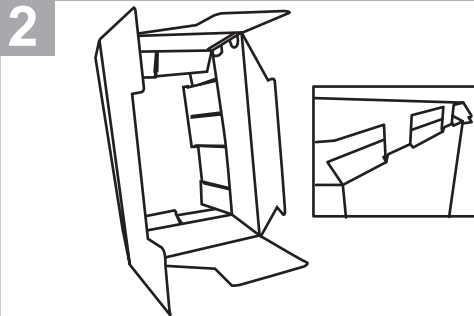
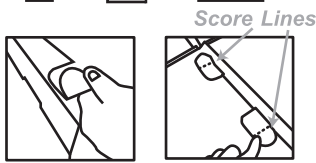
The contents include:

- 2 panels
- 4 shelves
- 1 middle section

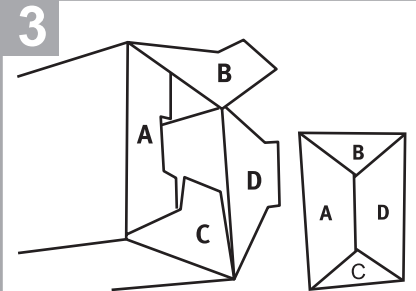
Assembly Instructions



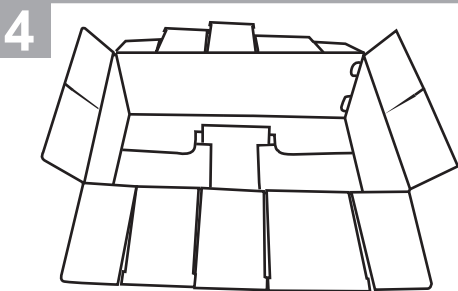
1 Lay the 2 panels end-to-end on a flat surface. Make sure flaps are located on the same side and facing opposite of you. Fold tabs in-half where score lines are indicated (see above). Insert tabs to connect panels, then press the tabs flat.



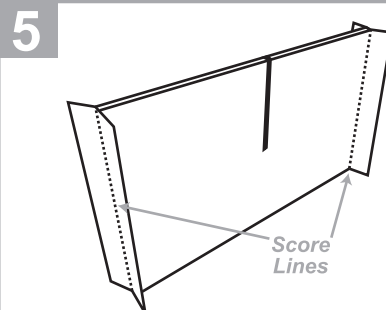
2 Raise both panels up towards each other. Note, taller portion of the end panel should be on your left. Fold the taller panel over to the smaller panel. Fold tabs in-half and insert into the panel to lock, then press the tabs flat.



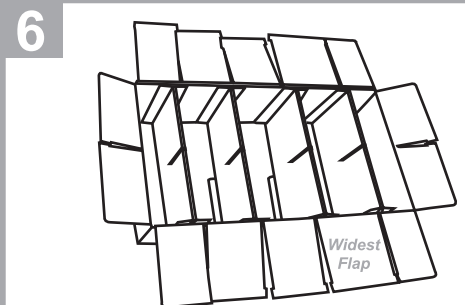
3 Fold flap A. Then fold flap B, then C. **Push flap D inside the shelf to secure the bottom.**



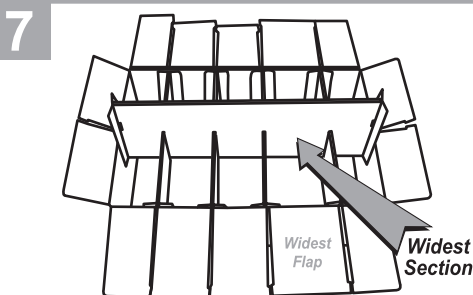
4 Lay the shelf on the floor with the open side up. Make sure flaps A, B, C & D are flat inside the shelf. Position all flaps so they are on the outside, away from the center of the unit.



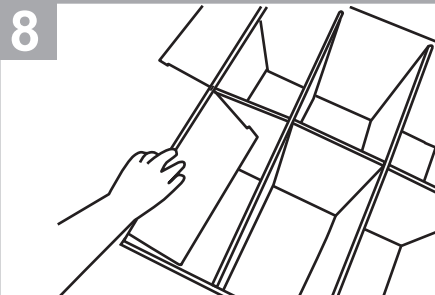
5 Fold each shelf in half (total 4) along the score line.



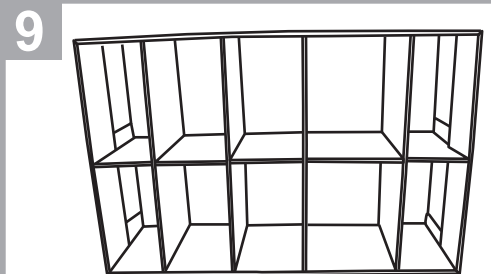
6 Place the four shelves inside (as shown), with the slit facing up. **Important:** Make sure the widest outer flap is on your right-hand side.



7 Slide the middle panel down, matching up center divider slits. **Important:** Make sure the widest section on the middle panel is on your right-hand side.



8 First fold and lock the two end flaps (on both sides). Then fold and lock all ten outer flaps to secure the shelves.



9 The completed shelf should look as shown with the widest opening second from the right.